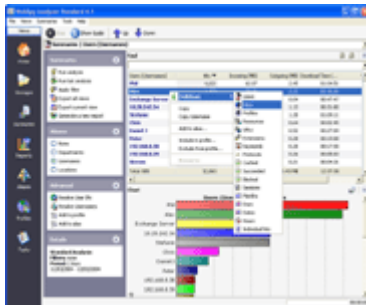


WebSpy is a world leader in the delivery of solutions for monitoring, controlling and optimizing Internet and network traffic.

WebSpy's low cost, robust solutions are in use by many clients around the world.



Analyzer Standard is a powerful Internet monitoring and reporting tool. You can import log files into Analyzer Standard that your Internet proxy server or firewall generates, and conduct detailed investigations into all areas of your organization's Internet usage.



Import:

Import up to 2 GB of log file data into a customized database called a 'storage'. Storages compress your log file data to approximately 10% of their original size so you can analyze your organization's Internet activity quickly and easily. Analyzer Standard supports a wide variety of log file formats.

Analyze:

Analyzer Standard's powerful drilldown functionality enables you to easily explore all areas of your

organization's Internet activity.

Uncover sources of Internet misuse, as well as help discover and reward users that are utilizing network resources productively.



Report:

Produce a range of comprehensive reports in a variety of formats. Export any information to Microsoft® Word (.DOC), Excel (.CSV), HTML (.WSR) format and Text (.TXT).

Customize:

You can customize your imported data to display user names (instead of IP addresses or computer names), site names (instead of IP addresses), departments, and file types (instead of file extensions) using Aliases.

You can also utilize Analyzer's customizable Profiles to sort your organization's Internet browsing into categories, such as Entertainment, Information Technology, and Adult.

Schedule:

Analyzer Standard enables task scheduling for overnight or weekend "set and forget" data importing and report generation.

New Features:

Analyzer Standard 4.1 has been developed with many new features and improvements on the previous version (Analyzer Standard 4.0).

Improved Reporting

Analyzer Standard 4.1 features significant optimizations to its native 'Storage' format and its reporting process.

Improved Tasks

More functionality can be set to run as part of a scheduled task. This functionality includes creating a new storage, importing hits, reloading hits, running a report, and resolving IP addresses to an

alias. You can add these new task actions using the Task dialog, or quickly set up a basic task using the Quick Task Wizard.

Save Analysis

Analyses with complex filters can now be saved, making subsequent runs through the Analysis Wizard much easier.

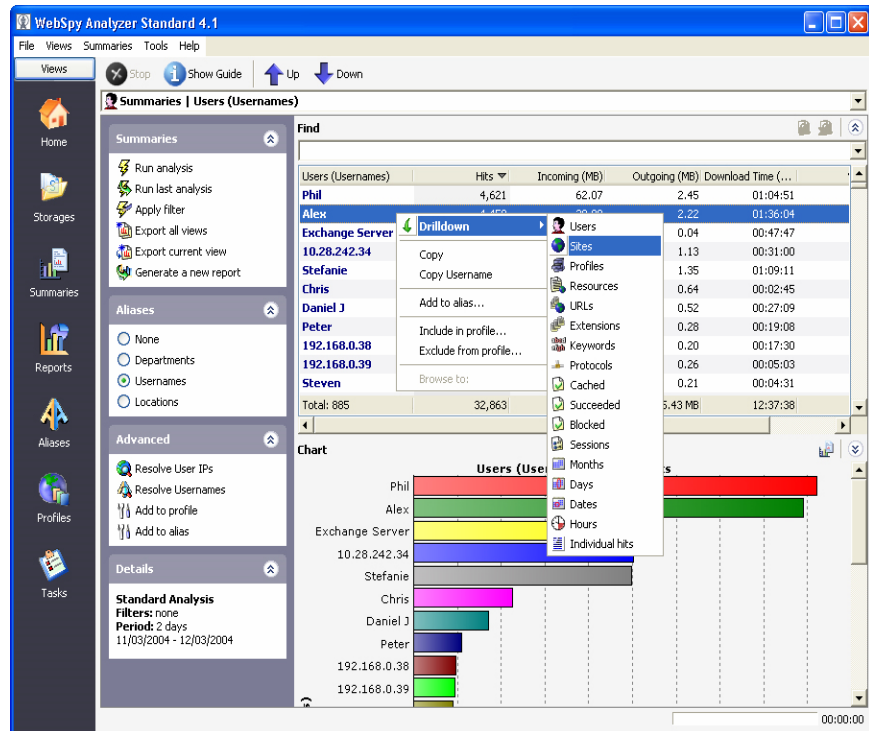
Plain Text Reports

Analyzer Standard enables you to create reports in plain text format.

Filter on Import

Analyzer Standard enables you to filter your data as it is being imported. This improves the efficiency of analysis and reporting, as only the data that you want to analyze exists in your storage.

Profile Keyword highlighting The Individual Hits summary highlights the part of a resource that has been



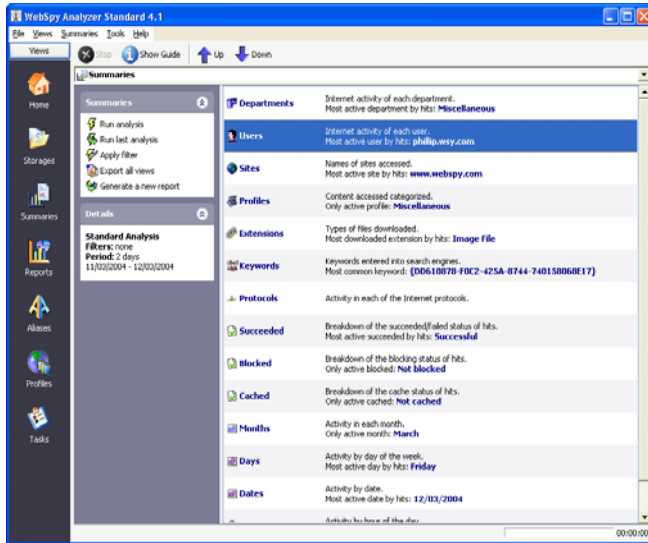
matched to a profile. This makes it much easier to update and maintain your profile's include and exclude keywords lists.

Automatic Updates

Analyzer Standard notifies you when new builds are available and enables you to download and install them automatically.

New Summaries

Analyzer Standard 4.1 enables you to drill down into more areas of your data. New summaries include HTTP Method, Status Code, Cached, Blocked, and Succeeded.



Hyperlink Sites in Reports

Any URL or web site displayed in HTML or Word reports are hyperlinked for quick investigation of a web site's appropriateness.

Total Browsing time for Sites and Dates

View the time users spent browsing web sites, and how long they spent browsing on certain dates.

Files and Settings saved on a per-user basis

All Analyzer Standard's files and settings are now stored separately for each user when run on Microsoft® Windows™ XP or 2000.

Existing Features:

Analyzer Standard 4.1 has retained all the features that has made Analyzer Standard 4.0 one of the most popular Internet log analysis tools available.

- Analyze your organization's Internet usage in one package
- Support for a wide variety of log formats
- Powerful drilldown ability for in-depth interrogation of data
- Create comprehensive reports in Microsoft® Word (.DOC), Excel (.CSV) or web document (HTML)
- Extract HTML files from WSR reports for publishing reports on a web page or intranet
- Easy to use right-click functionality to drilldown into data and to add information to aliases or profiles
- Customizable profiles allow you to categorize Internet browsing activity
- Find functionality enabling you to quickly find information
- Import/Export aliases and profiles to .CSV format for efficient editing of large files
- Task scheduling for "set and forget" data analysis
- Intuitive user interface with a web like look and feel
- Utilizes existing network resources such as Windows NT® User Groups
- Simple installation and set-up
- Context sensitive help to provide detailed information and assistance with all Analyzer Standard functionality

Minimum Requirements

- Microsoft® Windows™ 98, ME, NT4, 2000, XP, or Server 2003
- Internet Explorer 5.0
- Pentium PIII-500 MHz
- 256 MB RAM
- HDD 10 MB + 10% of logs imported

Requirements for advanced features

- Microsoft® Word 97 or above (to run Microsoft® Word reports)
- Microsoft® Internet Explorer 5.5 or higher (to view Analyzer HTML reports)
- Microsoft® MDAC 2.7 or higher (to use SQL loader)
- An Internet connection capable of accessing XML web services (to receive automatic updates)